



## OWP449T-150-6

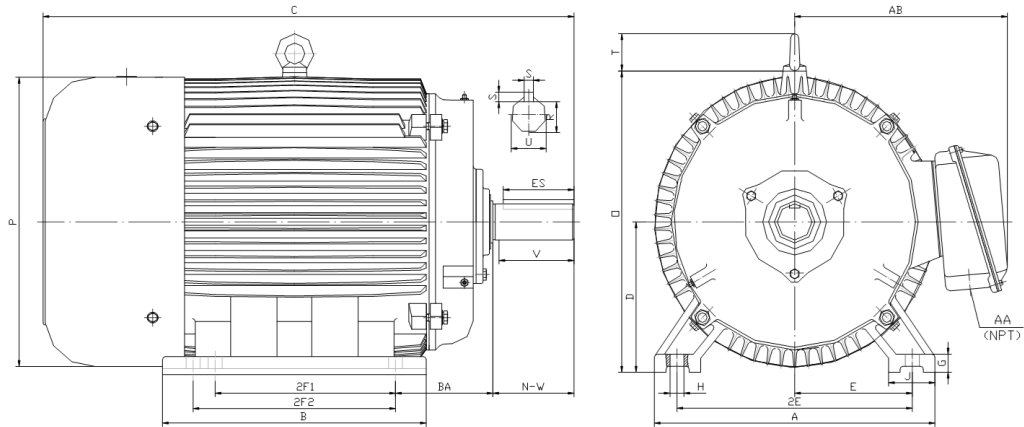
**OIL WELL PUMP MOTOR**

**HIGH TORQUE / HIGH SLIP (5 - 8%)**

**TOTALLY ENCLOSED FAN COOLED**

**INVERTER DUTY 10:1 CONSTANT TORQUE - NEMA MG1 PART 31**

**Factory Certified for T2B Class I, Division II, Groups A,B,C & D and Class II, Division II, Groups F & G**



### DIMENSIONS

HP	RPM	Frame	MOUNTING														
			A	B	C	D	G	H	J	E	2E	2F1	2F2	O	P	T	BA
150	1200	449T	21.7	31.4	52.8	11	1.35	0.81	3.35	9	18	20	25	23	23.4	3	7.5

Shaft Extension, Key Set						Conduit Box		Bearings		Mount
U	V	R	S	ES	N-W	AA	AB	DE	ODE	
3.375	8.25	2.88	0.875	6.91	8.5	3	19.9	NU319	6318	F2

**BEARING LUBRICATION:** The bearings come lubricated with Mobil Polyrex EM Polyurea Grease. It is recommended that you add some additional lubrication when the motor is installed.

Three options (brands) for suitable lubrication include, but are not limited to, the following:

- 1.) Mobil Polyrex EM
- 2.) Citco Polyurea MP
- 3.) Conoco Phillips Polytac EP





## OWP449T-150-6

**OIL WELL PUMP MOTOR**

**HIGH TORQUE / HIGH SLIP (5 - 8%)**

**TOTALLY ENCLOSED FAN COOLED**

**INVERTER DUTY 10:1 CONSTANT TORQUE - NEMA MG1 PART 31**


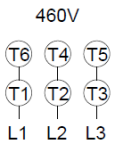
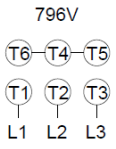



**Factory Certified for T2B Class I, Division II, Groups A,B,C & D and Class II, Division II, Groups F & G**

### PERFORMANCE DATA

HP	RPM	Frame	Voltage	Frequency (Hz)	Full Load S.F.	Insulation Class	NEMA Design	Slip (%)	NEMA Code	Enclosure Type	IP Rating	Max. Ambient
150	1140	449T	460/796	60	1.15	F	D	5.0	G	TEFC	55	40 °C

Amps (460V)		Efficiency (%)			Power Factor			Torque (ft-lb)			DE Bearing	ODE Bearing	Connection	Weight (lbs.)
FLA	LRA	100%	75%	50%	100%	75%	50%	FLT	LRT %	BDT %	NU319	6318	6 Lead Δ/Y	1980
180	1085	93.2	92.8	93.5	0.88	0.82	0.70	690	275	300				

### NAME PLATE

		<b>OIL WELL PUMP MOTOR AC INDUCTION MOTOR INVERTER DUTY 20:1 VT; 10:1 CT</b>				
TYPE	TEFC	MODEL	OWP449T-150-6	S.F.	1.15	460V 
HP	150	FRAME	449T	EFF	93.2	
RPM	1140	VOLTS	460/796	P.F.	0.88	
INS	F	AMPS	180/104	CODE	G	
PH	3	MAX AMB	40 °C	DE BRG	NU319	
HZ	60	S/N		ODE BRG	6318	
WT/LBS	1980	DESIGN	D	CONNECTION	6 Lead Δ/Y	796V 
Thermo-protection 155°C (PT1,PT2)			LUB Mobil Polyrex EM			
Designed Specifically for use on Oil Well Pumping Units Hernando, Mississippi   						

### APPLICATIONS:

Designed Specifically for use on Oil Well Pumping Units. Suitable for use on Variable Frequency Drives (VFDs).