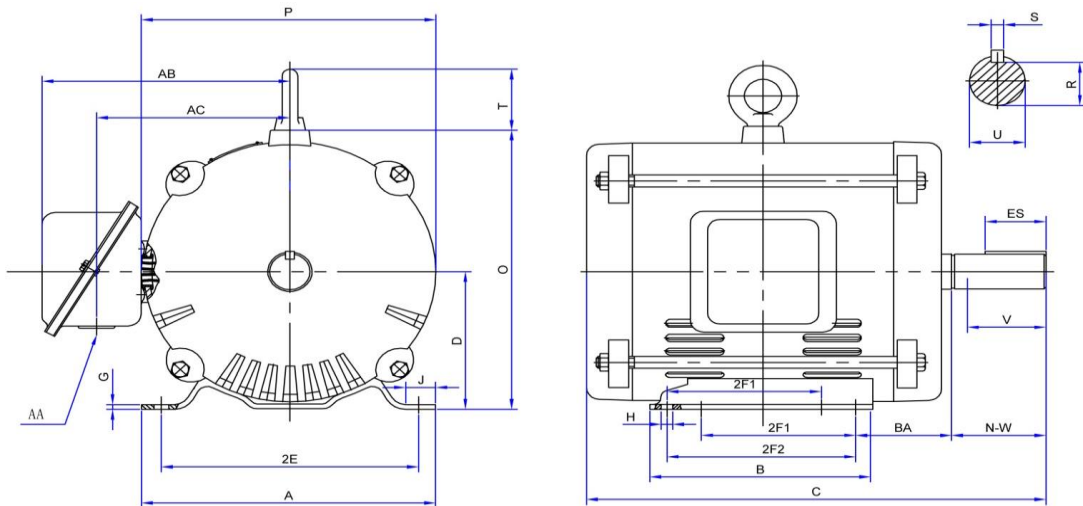




PR254T15M4A-ODP

GENERAL PURPOSE ELECTRIC MOTOR
NEMA PREMIUM EFFICIENCY
ROLLED STEEL CONSTRUCTION
OPEN DRIP PROOF ENCLOSURE
INVERTER RATED (10:1 VT; 5:1 CT)



DIMENSIONS

HP	RPM	Frame	MOUNTING														
			A	B	C	D	G	H	J	E	2E	2F1	2F2	O	P	T	BA
15	1800	254T	11.3	11.3	20.67	6.25	0.2	0.55	1.38	5	10	8.26	10	12	11.4	NA	4.25

Shaft Extension, Key Set						Conduit Box		Bearings		Mount
U	V	R	S	ES	N-W	AA	AB	DE	ODE	
1.625	3.7	1.416	0.375	2.91	4	1.38	9.6	6309-2RZC3	6208-2RZC3	F1

BEARING LUBRICATION: The bearings come lubricated with Mobil Polyrex EM Polyurea Grease. It is recommended that you add some additional lubrication when the motor is installed.

Three options (brands) for suitable lubrication include, but are not limited to, the following:

- 1.) Mobil Polyrex EM
- 2.) Citco Polyurea MP
- 3.) Conoco Phillips Polytac EP





PR254T15M4A-ODP



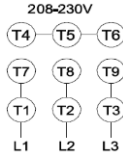



GENERAL PURPOSE ELECTRIC MOTOR
NEMA PREMIUM EFFICIENCY
ROLLED STEEL CONSTRUCTION
OPEN DRIP PROOF ENCLOSURE
INVERTER RATED (10:1 VT; 5:1 CT)

PERFORMANCE DATA

HP	RPM	Frame	Voltage	Frequency (Hz)	Full Load S.F.	Insulation Class	NEMA Design	Slip (%)	NEMA Code	Enclosure Type	IP Rating	Max. Ambient
15	1760	254T	208-230/460	60	1.15	F	B	2.2	G	ODP	23	40 °C

Amps (460V)		Efficiency (%)			Power Factor			Torque (ft-lb)			DE Bearing	ODE Bearing	Connection	Weight (lbs.)
FLA	LRA	100%	75%	50%	100%	75%	50%	FLT	LRT %	BDT %	6309-2RZC3	6208-2RZC3	9 Lead 2Y/Y	230
19.2	133	93.0	92.7	91.8	0.79	0.85	0.78	33	241	240				

NAME PLATE

		THREE PHASE AC INDUCTION MOTOR													
CAT NO: PR254T15M4A-ODP		FRAME	254T	PH	3										
HZ	60	S.F.	1.15	ENCL	ODP	IP	23								
HP	15	RPM	1760	DUTY	CONT	DES	B								
VOLT	208-230/460			AMB	40 °C		INS	F							
FLA	42-38.4/19.2			DE BRG	6309-2RZC3										
CODE	G	P.F.	0.79	ODE BRG	6208-2RZC3										
EFF	93.0	MIN	91.7	LBS	230										
CONNECTION	9 Lead 2Y/Y			SER NO.											
Hernando, MS www.naemotors.com										CC099B					

APPLICATIONS:

General purpose use on pumps, fans, blowers, compressors, conveyors, material handling and other industrial machinery installed in damp, dusty or dirty environments.